

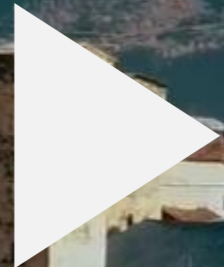
HIGHLANDER ADVENTURE

SVANETI X GEORGIA 2022



HIGHLANDER
ADVENTURE OF A LIFETIME

PRESS FOR VIDEO



0:07 / 1:00





1. ABOUT HIGHLANDER

HIGHLANDER is a ultimate long distance hiking adventure winding through the pristine nature and beauty of breathtaking mountainscapes.

HIGHLANDER was founded in 2017 by a few enthusiasts celebrating nature and exploring Croatia's mountainous slice of the Mediterranean – Velebit.

HIGHLANDER's main goal is to promote hiking, healthy living, and enjoying nature.

HIGHLANDER IS AN ADVENTURE OF A LIFETIME.
UNIQUE CONCEPT.
HIGHLANDER IS A CELEBRATION OF HIKING OPEN TO ALL NATURE LOVERS.

- THE ULTIMATE HIKING EXPERIENCE
- PROMOTION OF HIKING AS A LIFESTYLE
- IT'S NOT A RACE, IT'S AN ADVENTURE OF A LIFETIME



2. WHO ARE HIGHLANDERS

- Age: +18
- Interests: family, work, nature, travel
- Geo: 70% national, 30% international

WE ARE BUILDING THE
HIGHLANDER COMMUNITY.

HIGHLANDER IS ADVENTURER.
FRIEND OF NATURE.
RESPONSIBLE



3. EVENT FORMAT



2.1. HIGHLANDER 55

- Duration: 3 days / 72 hours (max)
- Distance: 60 km trail
- Trail: Start - Becho Valley
1st Check point Zhamushi
2nd Check point Adishi
Finish - Ushguli

- Capacity: max 200
- Pet-friendly

REQUIRES MODERATE HIKING

EXPERIENCE AND SOLID
PHYSICAL FITNESS LEVEL.



2.2. HIGHLANDER EXPERIENCE

- Duration: 2 days / 48 hours (max)
- Distance: 32 km trail
- Trail: Start – Zhamushi
1st checkpoint Adishi
Finish -Ushguli

- Capacity: max 100
- Pet-friendly

REQUIRES MINIMUM HIKING
EXPERIENCE AND MODERATE
PHYSICAL FITNESS LEVEL.

4. EVENT PROGRAM

Thursday

25
August

- Meeting at the Start point
- Briefing
- Official START
- Local handicraft masterclass

Friday

26
August

- Start of *HIGHLANDER*experience
- Local food masterclass

Saturday

27
August

- After party
- Food degustation
- Opportunity for activations
- Awarding ceremony

SIDE EVENTS (included in the price)

- Local food degustation
- Educational sessions (ecology & sustainability)
- Hiking instructions & presentations
- Concert at the Finish point
- EXPO zone at Start & Finish
- Yoga Session



5. CORE EVENT RULES:

1. HIGHLANDER IS NOT A RACE . Time is not recorded. All participants to complete the route become HIGHLANDERS.
2. There are two different HIGHLANDER formats in Georgia: HIGHLANDER55, HIGHLANDER EXPERIENCE.
3. During the event, existing shelters or similar lodgings are strictly off limits to participants.
4. Participants make the provided meals ready to eat using their gear.
5. Hiking means walking. No other modes of transportation are allowed.
6. Littering is strictly prohibited. Participants are to dispose of waste properly and responsibly..
7. The organizer will provide participants with three meals per day of the event.
8. Participants must register at checkpoints but must not be geo-tracked.
9. Participants must bring the required gear and carry it throughout the event. ([More Info](#))



6. ENTRY FEE

ENTRY FEE INCLUDES

- 9 meals total (3 meals per day)
- Transportation of participants to the Start point from Mestia / Finish point to Mestia
- Lockers in Mestia for extra luggage
- Mountain Rescue Service on duty
- HIGHLANDER Finisher Badge
- HIGHLANDER Finisher Certificate
- HIGHLANDER ID
- HIGHLANDER Map
- HIGHLANDER Map cover
- Party at Finish point

HIGHLANDER ID — detailed instructions with dedicated checkpoint stamp spaces.

HIGHLANDER MAP — detailed maps in waterproof case.



HIGHLANDER55 – 25/27 AUGUST

TICKETS – Single Entry

Early Bird: 170 Euro 15.05 – 05.06

Regular: 200 Euro 06.06 – 05.08

Last Call : 230 Euro 06.08 – 11. 08

TICKETS – Group Entry 3+1

Early Bird: 565 Euro 15.05 – 05.06

Regular: 690 Euro 06.06 – 05.08

Last Call: 815 Euro 06.08 – 11. 08

HIGHLANDEREXPERIENCE – 26/27 AUGUST

TICKETS – Single Entry

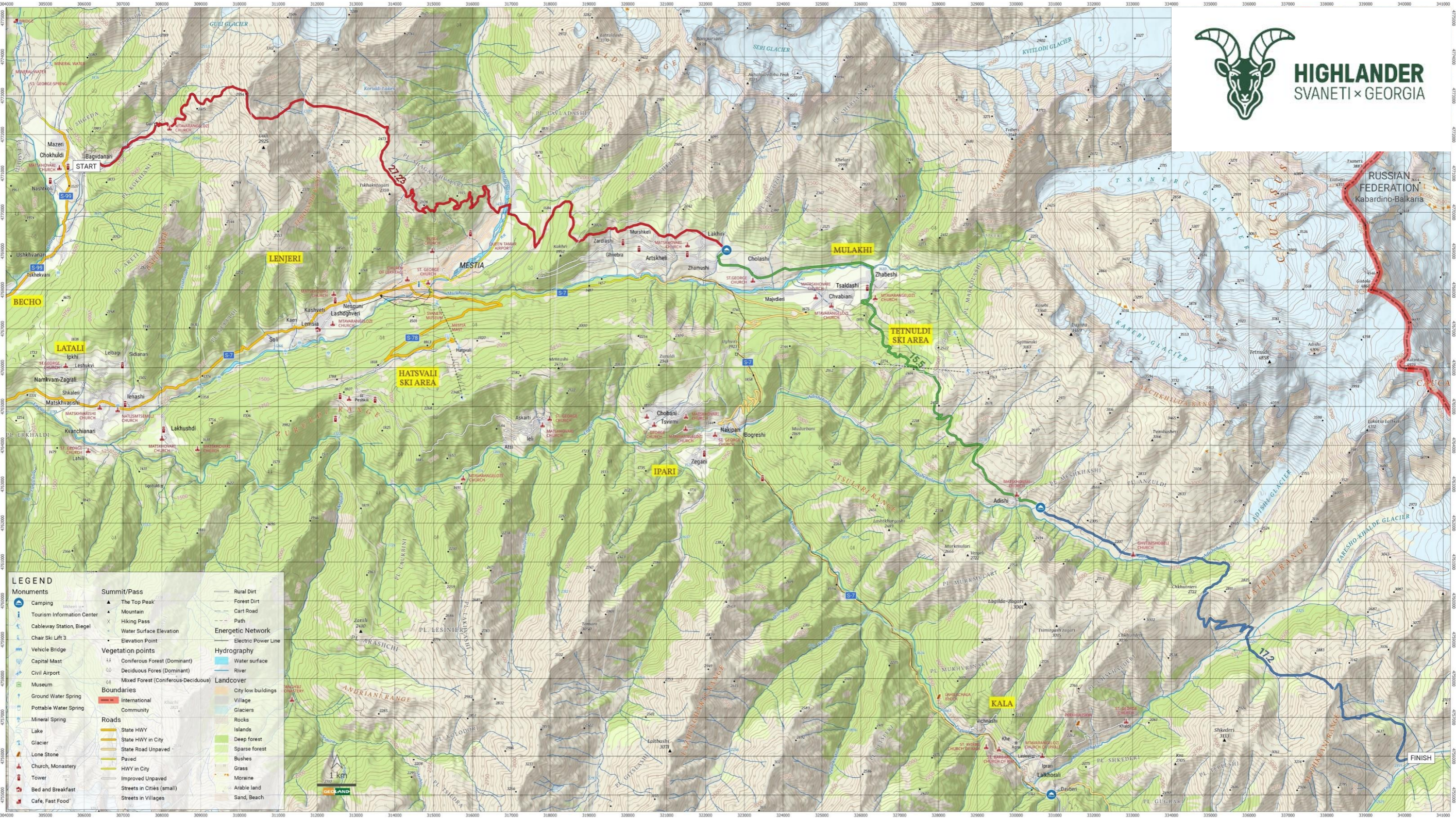
Early Bird: 45 Euro 15.05 – 05.06

Regular: 65 Euro 06.06 – 05.08

Last call: 90 Euro 06.08 – 11. 08



HIGHLANDER
SVANETI × GEORGIA



LEGEND	
Camping	Summit/Pass
Tourism Information Center	The Top Peak
Cableway Station, Biegel	Mountain
Chair Ski Lift 3	Hiking Pass
Vehicle Bridge	Water Surface Elevation
Capital Mast	Elevation Point
Civil Airport	Electric Power Line
Museum	Vegetation points
Ground Water Spring	Confiferous Forest (Dominant)
Pottable Water Spring	Deciduous Fores (Dominant)
Mineral Spring	Mixed Forest (Confiferous-Deciduous)
Lake	Landcover
Glacier	City low buildings
Lone Stone	Village
Church, Monastery	Community
Tower	Rocks
Bed and Breakfast	Islands
Cafe, Fast Food	Deep forest
	Sparse forest
	Bushes
	Grass
	Moraine
	Arable land
	Sand, Beach
	Rural Dirt
	Forest Dirt
	Cart Road
	Path
	Energetic Network
	Water surface
	River
	Hydrography
	Boundaries
	International
	Community
	Roads
	State HWY
	State HWY in City
	State Road Unpaved
	Paved
	HWY in City
	Improved Unpaved
	Streets in Cities (small)
	Streets in Villages



[/highlanderadventure](#)



[/highlander Georgia](#)



[/highlander Georgia](#)



HIGHLANDER
ADVENTURE OF A LIFETIME

HIGHLANDERADVENTURE.COM



ევროკავშირი
საქართველოსთვის
Project funded by the European Union



შვედეთი
Sverige



Austrian
Development
Cooperation



Speed your
Summer in
GEORGIA

“HIGHLANDER SVANETI, GEORGIA” IS SUPPORTED BY THE EUROPEAN UNION,
SWEDEN AND AUSTRIA IN THE FRAME OF THE GRETA PROJECT.

FIND OUT MORE INFORMATION ABOUT THE GRETA PROJECT: WWW.GRETAPROJECT.GE

